

# T-Tool – Quality Tool holders from Germany

## ISO/SK 30 and BT Tool holders for CNC Routers

Description	Part Number	D	A	N	Spindle/CNC
ISO25 ER25	SPZ.25ISO06525ERR	46	64.9	42	Colombo
SK30 ER32 HSD	SPZ.30DIN05032ERR	50	50	50	HSD/Various
SK30 ER40 HSD	SPZ.30DIN06440ERR	50	64	63	HSD/Various
SK30 ER32 Colombo	SPZ.30DIN06332ERR	50	63	50	Colombo/HSD
SK30 SYOZ25 Anderson	SPZ.30DIN06425OZR	50	64	60	Anderson/Omnitech
ISO30 ER32 CMS	SPZ.30ISO05032ERR	46	50	50	CMS
BT30 ER32 Shoda	SPZ.30BT06032ERR	46	60	50	Shoda
BT30 ER32 Komo	SPZ.30BTW06032ERR	46	60	50	Komo w/o dogs
BT30/ISO ER32 T'wood	SPZ.30BTBR05532ERR	57.1	55	50	Thermwood Only

## HSK 40F /50F / 63F Tool holders for CNC Routers

Description	Part Number	D	A	N	Spindle/CNC
HSK-40F ER25	SPZ.HSK40F06025ERR	40	60	35	PDS
HSK-50F ER32 Skipper	SPZ.HSKSKIP06532ERR	50	65	50	HSD/Biesse
HSK-50F ER32	SPZ.HSK50F07032ERR	50	70	50	Various
HSK-63F ER32 A70	SPZ.HSK63F07032ERR	63	70	50	SCM/Various – 46mm Flats
HSK-63F ER32 A100	SPZ.HSK63F10032ERR	63	100	50	SCM/Various – 46mm Flats
HSK-63F ER40 A76	SPZ.HSK63F07640ERR	63	76	63	Various – 46mm Flats
HSK-63F ER40 A90	SPZ.HSK63F09040ERR	63	90	63	Various – 46mm Flats
HSK-63F SYOZ25 A76	SPZ.HSK63F07825OZR	63	76	60	Homag/Onsrud/Various – 46mm Flats
HSK-63F SYOZ25 A80	SPZ.HSK63F08025OZR	63	80	60	Anderson – Omnitech – 38mm Flats
HSK-63F SYOZ25 A115	SPZ.HSK63F11525OZR	63	115	60	Various – 46mm Flats

## HSK 25E / 32E / 63E for CNC Routers

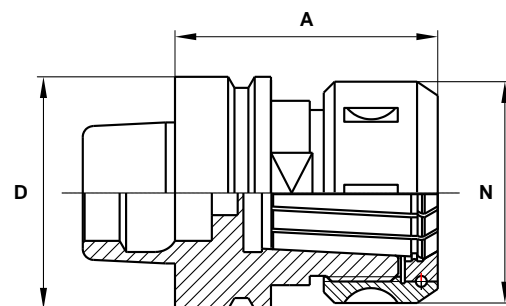
Description	Part Number	D	A	N	Spindle/CNC
HSK-25E ER16 Mini	SPZ.HSK25E04016ERM	25	40	22	Multicam - Others
HSK-32E ER25	SPZ.HSK32E06025ERR	32	60	42	Multicam - Others
HSK-63E ER32	SPZ.HSK63E07032ERR	63	70	50	SCM - Others
HSK-63E ER40	SPZ.HSK63E07640ERR	63	76	63	SCM - Others

## HSK 63F Drill Chuck CNC Routers

SK-30 Drill Chuck 1-13mm (1/2"), A=98	BOF.30DIN09813
HSK-63F Drill Chuck 1-13mm (1/2"), A=98	BOF.HSK63F09813
HSK-63F Drill Chuck 3-16mm (5/8"), A=103	BOF.HSK63F10316

## HSK 63F 1.25" Milling Arbors

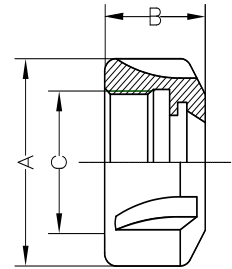
HSK-63F Arbor 55mm, A=45	FD.HSK63F0450553175
HSK-63F Arbor 80mm, A=45	FD.HSK63F0450803175
HSK-63F Arbor 100mm, A=45	FD.HSK63F0451003175
HSK-63F Arbor 112mm, A=45	FD.HSK63F0451123175



## T-Tool – Quality Tool holders Accessories

### Collet Nuts for CNC Routers – Made in Germany

Description	Part Number	A	B	C
ER16 Collet Nut	SPAMU16UMERPROF	32	17.5	M22x1.5
ER20 Collet Nut	SPAMU20UMERPROF	35	19	M25x1.5
ER25 Collet Nut	SPAMU25UMER	42	20	M32x1.5
ER32 Collet Nut	SPAMU32UMER	50	23	M40x1.5
ER40 Collet Nut	SPAMU40UMER	63	25	M50x1.5
SYOZ 20 Collet Nut	SPAMU1822OZF	35	20	M27x1.5
SYOZ 25 Bearing Nut	SPAMU1825OZK	60	30	M48x2.0
ER25 Bearing Nut	SPAMU25UMERKM	42	22	M32x1.5
ER32 Bearing Nut	SPAMU32UMERKM	50	26	M40x1.5
ER40 Bearing Nut	SPAMU40UMERKM	63	29	M50x1.5

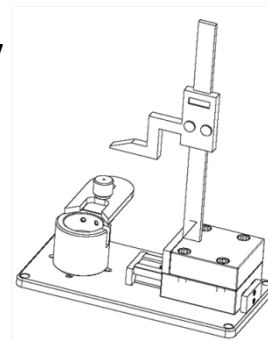


### Pull Studs for CNC Routers – Made in Germany

Description	Part Number	CNC
SK30 Pullstud	BO30DIN69872A	Weeke, Bussellato, Colombo (billet), Andi
SK30 Pullstud	BO30SCMMOR10	SCM / Morbidelli – Toothed Holders
SK30 Pullstud	BO30BIERUN12	Biesse/HSD Buttonhead
SK30 Pullstud	BO30AIBE12	Alberti, Masterwood (Colombo – ball)
SK30 Pullstud	BO30CMS12	CMS
BT30 Pullstud	BO30BTKOMO	BT30 Komo
BT30 Pullstud	BO30BT45	BT30 45degree Heian
BT30 Pullstud	BO30BT60	BT30 60degree Shoda

### Tightening Stands for HSK Tool holders – Made in Germany

Description	Part Number
HSK-32E Tightening Fixture	MOHSK-32E
HSK-40E Tightening Fixture	MOHSK-40E
HSK-50E Tightening Fixture	MOHSK-50E
HSK-63F / 63E Tightening Fixture	MOHSK-63F/63E



These fixtures are also available with digital height gauge. Each fixture supplied with appropriate flats-fork. ISO/BT also available please inquire.

### Miscellaneous

Description	Part Number
CMS ER32 Turret Chuck including nuts	SPZ.30CMS04532ERR
HSK-63 ER40 Weinig Collet Chuck	SPZ.HSK63WE07040ERR

## T-Tool – Quality Tool holders Accessories

### Collets – Metric or Inch

Description	Part Number	Dims: Length / OD Diam.
ER16 Collet – specify size xxxx	SPAZ.16DIN6499xxxx	27.5 (1.08”) / 17mm (0.67”)
ER20 Collet – specify size xxxx	SPAZ.20DIN6499xxxx	31.5mm(1.24”) / 21mm(0.83”)
ER25 Collet – specify size xxxx	SPAZ.25DIN6499xxxx	34mm(1.34”) / 26mm(1.02”)
ER32 Collet – specify size xxxx	SPAZ.32DIN6499xxxx	40mm(1.57”) / 33mm(1.3”)
ER40 Collet – specify size xxxx	SPAZ.40DIN6499xxxx	46mm(1.81”) / 41mm(1.61”)
SYOZ20 Collet – specify size xxxx	SPAZ.12DIN6388xxxx	34mm(1.33”) / 20mm(0.78”)
SYOZ25 Collet – specify size xxxx	SPAZ.25DIN6388xxxx	52mm(2.06”) / 35mm(1.38”)

### Wrenches

Description	Part Number
Adjustable Torque Wrench	PRO100 15-80Lbf.ft
Adjustable Torque Wrench	PRO200 50-150Lbf.ft
Adjustable Torque Wrench	PRO300 45-220Lbf.ft
ER32 Collet Key	To Adapter ER32
ER40 Collet Key	To Adapter ER40
SYOZ25 Collet Key	To Adapter 60-62DIN
ER20 Spanner Wrench - Slotted	SCHDIN649920
ER25 Spanner Wrench - Slotted	SCHDIN649925
ER32 Spanner Wrench - Slotted	SCHDIN649932
ER40 Spanner Wrench - Slotted	SCHDIN649940
SYOZ25 Spanner Wrench – Hook Type	SCHDIN638860

NOTE: The items shown in this flyer are the most popular items, if you do not see what you need please inquire. Rev. 7/2021



T-Tool USA, LLC  
2850 Glades Circle, Suite 15  
Weston, FL 33327  
P: 954-358-6071 F: 954-358-6073  
[www.t-toolusa.com](http://www.t-toolusa.com)