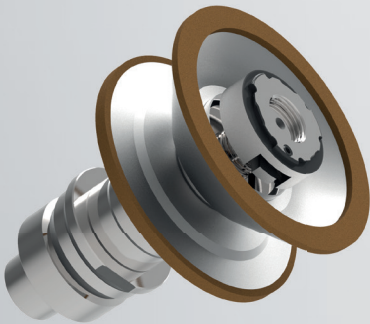


OPERATION MANUAL

ZETA Safety clamping nuts for wheel arbors.

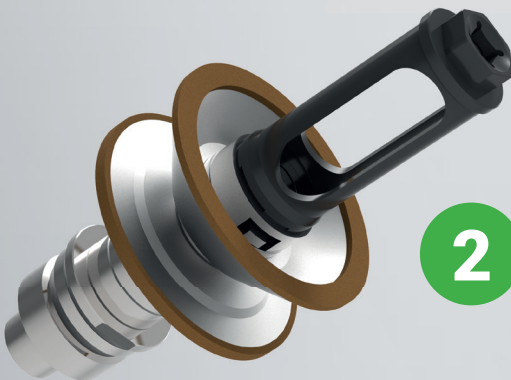


DO NOT CLAMP THE SCREW BEFORE SCREWING IT ONTO THE WHEEL ARBOR!



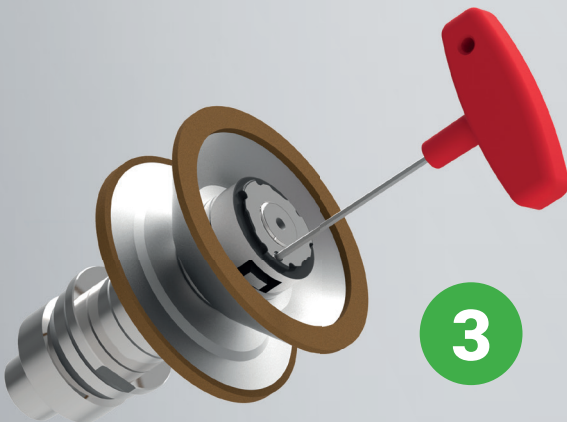
1

Screw on the ZETA safety nut by hand.



2

Use the ZETA operating tool to tighten the safety nut.



3

Lock the safety nut by tightening the screw.

