



ER-MS zeta[®]

COLLET NUT SYSTEM

FOR HIGH SPEED APPLICATIONS

**THE NEW GENERATION OF
ER-MS CLAMPING NUT!**

Front-side operation instead
of a thin-lip wrench – more
torque, less space required.

PATENT PENDING

”

ER-MS Zeta: The New Dimension of Tool Clamping
Maximum Gripping Force Meets Uncompromising Ergonomics

THE ZETA OPERATING PRINCIPLE

1 **Tightening:** Simple tightening with the Zeta manual spanner or torque socket directly from the front

2 **Release:** The innovative extractor clip is inserted into the side slots to safely lift the collet out of the taper.

3 **The Result:** Faster tool changes with maximum clamping force.



ER-MS ZETA

ER-MS ZETA

ER-MS Zeta: The Revolution of the ER-MS High-Speed Nut

The **ER-MS Zeta clamping nut system** by Zollmann GmbH sets a new benchmark for collet clamping in modern machining. It is the next evolution of the proven ER-MS high-speed clamping nut, optimized for the high demands of today's production environments.

What's in for you?

- ✓ **Maximum Clamping Force & Process Reliability**
Using Zeta torque sockets or adapters ensures **precise torque values according to DIN 6499**. This prevents over-tightening and deformation while providing an extremely secure hold for shank—tools—even at high feed rates and cutting speeds.
- ✓ **Ideal for tight Machine Space**
The compact design eliminates the swing clearance required for traditional wrenches, making ER-MS Zeta **perfect for Swiss-type lathes and other space-critical machines**.
- ✓ **Simple, durable, and economical**
Torque sockets prevent both overtightening and material deformation. This **reduces wear and tear, ensuring long-lasting, precise clamping**. Zeta operating tools and extracting clip enable intuitive operation, ensuring fast, safe and convenient handling.

Handling is simple and safe

Tools can be tightened using either the Zeta manuell spanner or the torque socket. To release the collet, simply use the innovative extraction clip – quick, safe and easy for any operator.

Innovation: Say Goodbye to Bulky Wrenches

The ER-MS Zeta replaces bulky thin-lip open-end wrenches with an innovative front-end operating system. This design drastically reduces the space required around the nut while enabling significantly higher torque transmission.

ER-MS ZETA OPERATION TOOLS



ER-MS TORQUE-NUT
for tightening with a torque wrench



ER-MS TORQUE WRENCH ADAPTER
for 16mm spigot adapters



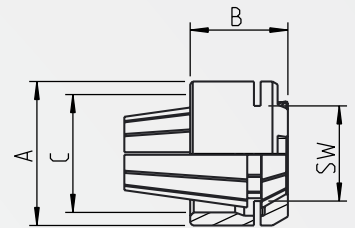
ER-MS SPANNER WRENCH
the simple solution for easy manual clamping

ER-MS COLLET NUTS



ER-MS collet nuts (new MS nut with Zetaprofile)

Type	A	B	C	SW	Part number	RRP
ERMS08Zeta	12	10,8	M10x0,75	8	SPAMUERMS08Zeta	€
ERMS11Zeta	16	11,5	M13x0,75	10	SPAMUERMS11Zeta	€
ERMS16Zeta	22	17,8	M19x1	15	SPAMUERMS16Zeta	€
ERMS20Zeta	28	19	M24x1	18,5	SPAMUERMS20Zeta	€



TORQUE VALUES FOR ER-MS NUTS

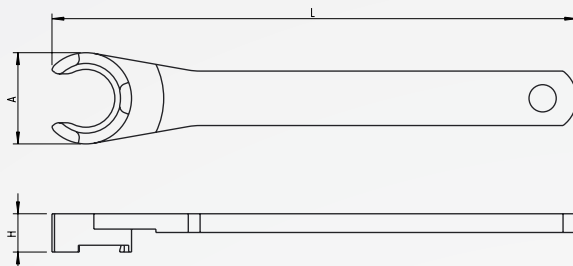
Type	Nm	Lbf.ft
ERMS08Zeta	12	9
ERMS11Zeta	25	18
ERMS16Zeta	40	30
ERMS20Zeta	55	40

ER-MS ZETA OPERATION TOOLS



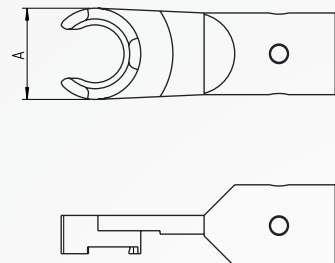
ERMS handspanner wrench

Size	A	L	H	Part number	RRP
ERMS08Zeta	12	93	9	SCHEMS08Zeta	€
ERMS11Zeta	16	96	9,5	SCHEMS11Zeta	€
ERMS16Zeta	22	146	10	SCHEMS16Zeta	€
ERMS20Zeta	27	154	11,5	SCHEMS20Zeta	€



ERMS torque wrench (Spigot 16)

Size	A	Part number	RRP
ERMS11Zeta	16	THMS11Zeta	€
ERMS16Zeta	22	THMS16Zeta	€
ERMS20Zeta	27	THMS20Zeta	€

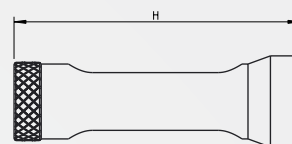


ER-MS ZETA OPERATION TOOLS



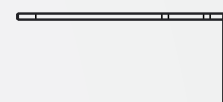
ERMS torque nut

Size	A	H	V	Part number	RRP
ERMS08Zeta	12	65	1/4"	STECMS08Zeta	€
ERMS11Zeta	16	75	1/4"	STECMS11Zeta	€
ERMS16Zeta	22	80	3/4"	STECMS16Zeta	€
ERMS20Zeta	28	84	3/4"	STECMS20Zeta	€



Extractor clip for ERMS Zeta collet nuts

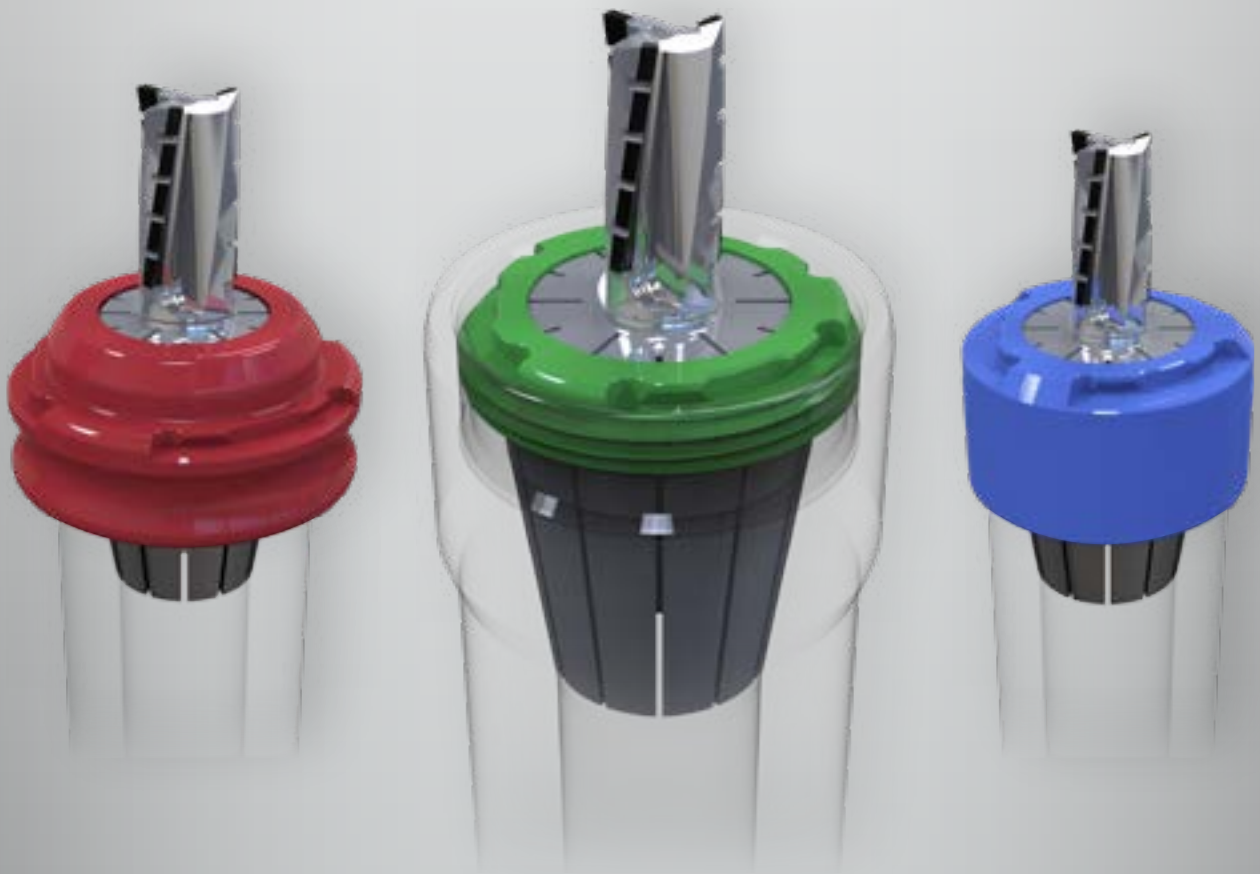
Size	SW	Part number	RRP
ERMS08Zeta	8	AKMS08Zeta	€
ERMS11Zeta	10	AKMS11Zeta	€
ERMS16Zeta	15	AKMS16Zeta	€
ERMS20Zeta	18,5	AKMS20Zeta	€





Designed by our engineers for
practical machinists.

THE EASIEST WAY TO INNOVATE.



DISCOVER THE FULL ZETA PRODUCT LINE

PRECISE TIGHTENING

Defined torque possible



MAXIMUM SAFETY

User and tool protected.

LOW INTERFERENCE

Tightening of closely spaced tools possible.

